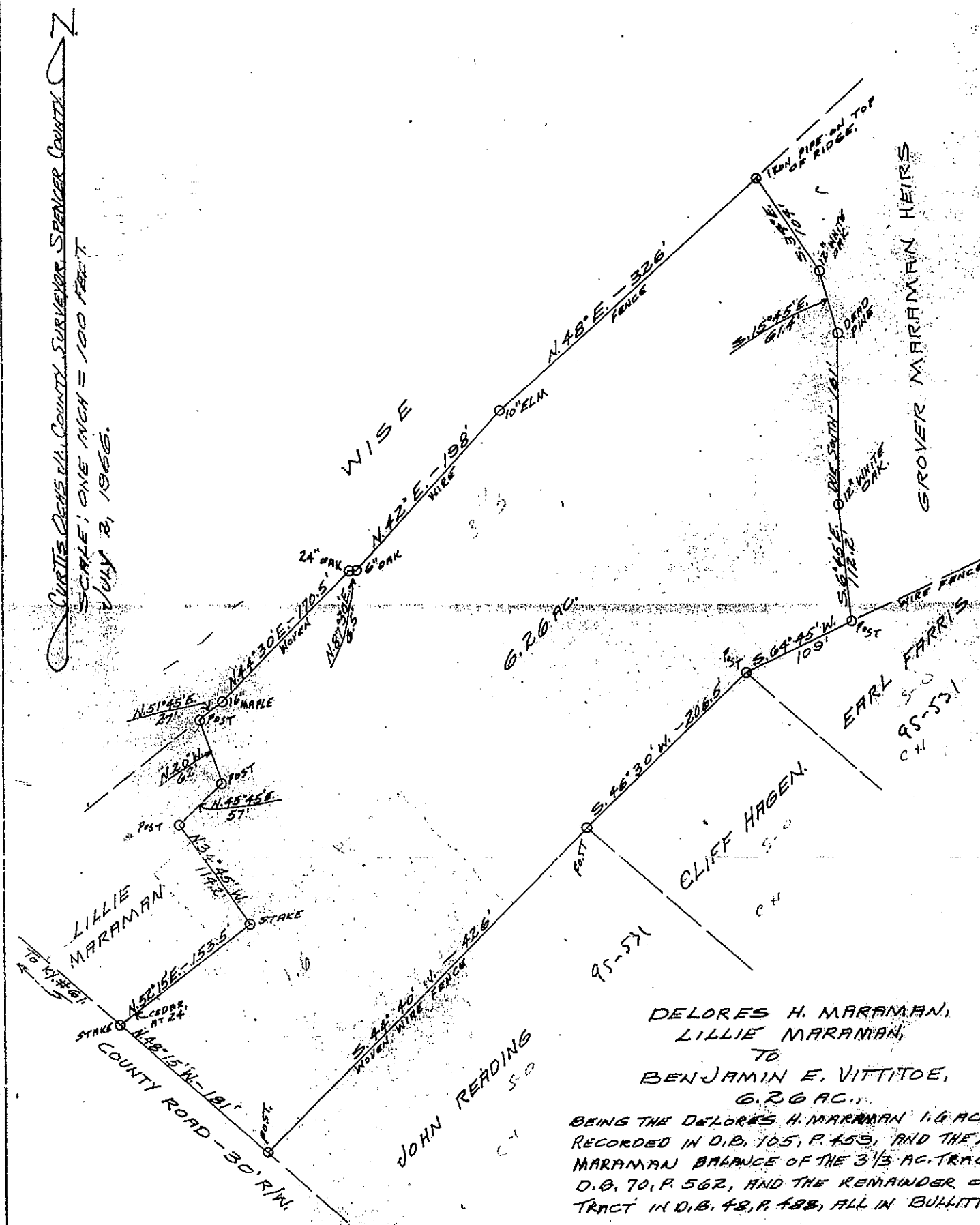


CURTIS DENNIS JR., COUNTY SURVEYOR, SPENCER COUNTY, MISSOURI  
 SCALE: ONE INCH = 100 FEET  
 JULY 31, 1966.



DELORES H. MARAMAN,  
 LILLIE MARAMAN,  
 TO  
 BENJAMIN E. VITTITOE,  
 6.26 AC.,  
 BEING THE DELORES H. MARAMAN 1.6 AC.  
 RECORDED IN D.B. 105, P. 459, AND THE L.  
 MARAMAN BALANCE OF THE 3 1/3 AC. TRACT  
 D.B. 70, P. 562, AND THE REMAINDER OF  
 TRACT IN D.B. 48, P. 488, ALL IN BULLITT